

**This document contains:**

- The Event Covid-19 risk assessment and risk mitigation plan in accordance with the [FEI Policy for Enhanced Competition Safety during the Covid-19 Pandemic](#)
- The Event Approved Schedule

*Given the current covid-19 situation, please note that the FEI's approval of a Schedule should not be taken as an absolute guarantee that the Event will definitely go ahead. The decision whether the Event can take place must be made by the OC and NF in close consultation with the applicable domestic government and public health authorities. It is the responsibility of each Participant to check the status of the Event prior to planning his/her travel to the Event.*

**Risk assessment for COVID-19: Addendum for sporting events.**

<b>Additional risk of COVID-19 to the sporting event</b>	<b>Yes (1)/No (0)</b>	<b>Score</b>
<b>Will the event be held in a country that has documented active local transmission of COVID-19 (community spread)?</b>	1	1
<b>Will the event be held in a single venue or multiple venues/cities/countries?</b> <i>(single venue = 0; multiple venues = 1)</i>	0	0
<b>Will the event include international participants (athletes and spectators) from countries that have documented active local transmission of COVID-19 (community spread)?</b> <i>(NB: if the Events does not involve spectators, please clarify this in the comments to the questions in relation to spectators in the "Mitigation Checklist" sheet)</i>	1	1
<b>Will the event include a significant number of participants (athletes or spectators) at higher risk of severe COVID-19 disease (e.g., people over 65 years of age or people with underlying health conditions)?</b>	0	0
<b>Will the event include sports that are considered at higher risk of spread for COVID-19 (eg, contact sports)?</b>	0	0
<b>Will the event be held indoors?</b> <i>(Yes = 1; No = 0)</i>	0	0
<b>Total COVID-19 risk score</b>		<b>2</b>

**Mitigation Checklist.**

Topic	Key consideration	Score Yes/Completed (2), Maybe/In progress (1), No/Not considered (0)	Weighting	Total score	Comments
<b>Understanding of the overview of the current COVID-19 situation by the event organizers</b>	Have the relevant OC and responsible staff been informed about the <b>latest available guidance on the COVID-19 outbreak</b> (official web resources available from WHO, CDC, ECDC, UN, local public health authorities)? And are the OC and staff concerned committed to following the available guidance?	2	1	2	
	Is the OC aware of global and local daily situation reports as provided by WHO or local public health authorities?	2	1	2	
	Do the OC and responsible staff understand the risks and transmission routes of COVID-19, the steps that Event attendees can take to limit spread, the recognized best practices (including respiratory etiquette, hand hygiene, physical distancing, etc.), and the travel restrictions adopted by different countries that may affect the Event?	2	1	2	
<b>Event emergency preparedness</b>	Has a <b>contingency medical response plan for COVID-19</b> been developed for the Event?	1	3	3	

**FEI APPROVED SCHEDULE  
KRONBERG (GER) 23-27 June 2021**

<b>and response plans</b>	Does the contingency medical response plan include <b>information about how attendees should interact with the host country healthcare system</b> (e.g. hotline/helpline telephone number, medical teams and first-aid points for the Event, local health care system)?	1	3	3	
	Is there an <b>Emergency COVID-19 Outbreak Response Coordinator/Team</b> in the OC or other structure for the Event with defined roles and responsibilities, coordinating the health preparedness and response planning for the outbreak?	2	2	4	
	Has the host country or OC requested <b>support from WHO and/or local public health authorities?</b>	2	3	6	
	<b>Has the OC acquired the following supplies to help reduce the risk of transmission of COVID-19?</b>				
	Personal protective equipment (e.g. masks, gloves, gowns) for onsite medical personnel	2	3	6	
	Hand sanitizer and alcohol rubs/gels, tissues, frequently replaced soap canisters and closed bins for safe disposal of hygienic materials (e.g. tissues, towels, sanitary products) in washrooms and changing rooms	1	3	3	
	Hand sanitizers and alcohol rubs for all entrances and throughout the venue	2	3	6	
	<b>If a person feels unwell/ shows symptoms of an acute respiratory infection during the Event:</b>				
	Is there a procedure for athletes or spectators to clearly identify <b>whom to contact and how to do so</b> if they or other Event participants feel unwell?	2	3	6	
	Is there a protocol on whom the OC should contact in the host country to report	1	3	3	

**FEI APPROVED SCHEDULE  
KRONBERG (GER) 23-27 June 2021**

suspected cases and request testing and epidemiological investigations?				
Are <b>first-aid services or other medical services</b> in-place and equipped to support patients with respiratory symptoms?	2	2	4	
Are there <b>isolation rooms or mobile isolation units</b> available onsite?	0	2	0	
Are there any <b>designated medical facilities</b> that manage patients with COVID-19 infection in the host country?	2	2	4	
Are there <b>transportation services with trained medical professionals</b> available to transport critically ill patients with severe acute respiratory infections to a hospital or to evacuate them from the host country, if necessary?	2	2	4	
Has a <b>cleaning schedule</b> been developed to ensure the venue is clean and hygienic – wiping surfaces and any equipment regularly with disinfectant is strongly recommended (before, during and after the event and between each round of competition)?	1	3	3	
Are there established <b>screening measures</b> , including temperature checks in place for participants at the point of entry, venues, routes and on-site medical facilities (first-aid points)? (Please specify in Comments what these screening measures include)	2	3	6	Covid Quick Tests at the entrance
Is the host country conducting COVID-19 <b>laboratory diagnostic tests</b> ? (If Yes, please specify in comments the type of COVID-19 diagnostic test used)	2	3	6	a number of test are used in Germany at the moment
Does the host country have a <b>national public health emergency preparedness and response plan</b> that can address severe respiratory diseases, including COVID-19?	2	2	4	

**FEI APPROVED SCHEDULE  
KRONBERG (GER) 23-27 June 2021**

	Is there a <b>preliminary agreement by the host country to provide care</b> for any COVID-19 cases connected with the Event?	1	3	3	
	If the Event is for a duration of 14 days or longer, does the medical response plan for the event include resources and protocols for managing all public health interventions that would be necessary and supporting the national public health authorities if participants are infected and become unwell at the Event? (If the event is for less than 14 days, please score 0)	0	3	0	
	If the Event is for less than 14 days, does the medical response plan include protocols for OCs to notify all participants of possible exposure to COVID-19 if the OCs are made aware of any suspected or confirmed cases that attended the Event? (If the event is for 14 days or longer, please score 0)	2	3	6	there will be a mentors attendance form for everyone who participates within the event including their contact info (Email, Cell phone, phone and address)
<b>Stakeholder and partner coordination</b>	Is there an established mechanism for collaboration and coordination between <b>the health and security sectors</b> , which is considered as crucial?	2	2	4	
	Are there agreed, clear and easily understood processes in place for <b>reporting to external multi-sectoral stakeholders</b> (including surveillance authorities, WHO, CDC, ECDC, etc.) and disseminating risk communication messages (Media)?	1	2	2	
<b>Command and control</b>	Is there a decision-making authority/body and an agreed procedure to <b>modify, restrict, postpone or cancel the</b> Event related to the evolving COVID-19 outbreak?	2	3	6	
	Are there arrangements to activate a <b>strategic health operation centre</b> if there are suspected COVID-19 cases in connection with the Event?	1	2	2	

**FEI APPROVED SCHEDULE  
KRONBERG (GER) 23-27 June 2021**

	Have the OC and staff undergone training and exercises on personal safety procedures and emergency mitigation measures (including those specifically listed in this checklist)?	2	3	6	
<b>Risk communication</b>	Is there a <b>risk communication strategy</b> for the Event in regard to COVID-19?	1	3	3	
	Is there a <b>designated person(s) to lead media</b> activities and tasked with managing all external communications with national and international government officials, the general public, and the media? (If yes, please identify the spokesperson in comments)	2	2	4	Martina Brüske
	Has there been <b>monitoring of national and international media and social media</b> established for <b>rumours</b> to be able to counter them early? (Please explain in the comments what protocols are in place for counter messaging)	2	2	4	
	Has coordination been set up with major official media channels and social media sites such as Twitter, Facebook and Instagram so that messaging can be coordinated with, and assisted by, the platforms to provide targeted messaging from OCs (including messaging to counter fake news and rumours, and proactive messaging about the status of the sporting event, including changes)?	0	2	0	
<b>Public health awareness of COVID-19 before and during the event</b>	Has <b>public health advice</b> on clinical features of COVID-19, preventive measures, especially respiratory etiquette, hand hygiene practices, and physical distancing, been shared with all staff involved in the Event, athletes, the public, and personnel of all relevant stakeholders?	2	3	6	

**FEI APPROVED SCHEDULE  
KRONBERG (GER) 23-27 June 2021**



	Has information on the <b>at-risk populations</b> been provided to all athletes, the public and others so they may make an informed decision on their attendance based on their personal risks?	2	3	6	
	Has public advice included information on the meaning of the following <b>measures: quarantine, self-isolation and self-monitoring?</b>	2	2	4	
<b>Surge capacity</b>	<b>Are there any surge arrangements in place in the event of a public health emergency during the Event - (i.e. suspected and confirmed cases of COVID-19?)</b>				
	Do these surge arrangements include funding for mitigation measures?	1	3	3	
	Do these surge arrangements include stockpiles of equipment (e.g. personal protective equipment, etc.)	1	3	3	
	Do these surge arrangements include training of extra staff?	1	2	2	
	Do these surge arrangements include volunteers?	1	2	2	
<b>Specific mitigation measures</b>	Will there be <b>daily health checks</b> of athletes/competitors?	1	2	2	
	Will the <b>athletes be separated from other groups</b> , such as officials, support staff and spectators, to limit transmission?	1	2	2	
	Are there measures in place to <b>limit the sharing of equipment, water bottles, towels, etc.?</b>	2	3	6	
	Will athletes be given closed <b>containers to allow for the safe disposal or storing of all hygienic materials</b> (e.g. tissues, towels, etc.)?	0	3	0	
	Will the Event have <b>designated seating</b> for all spectators?	2	3	6	



**FEI APPROVED SCHEDULE  
KRONBERG (GER) 23-27 June 2021**

	Does the designated <b>seating provided allow for physical distancing</b> between spectators (minimum of 1 metre)?	2	2	4	
	Have <b>pre-travel health checks</b> been performed on all athletes to ensure underlying co-morbidities, medications, allergies, etc. are documented?	1	2	2	

<b>Sum of mitigation measures</b>	165
<b>Total mitigation score (%)</b>	<b>75</b>

165

# FEI APPROVED SCHEDULE KRONBERG (GER) 23-27 June 2021



The decision matrix takes the risk score and the mitigation score to provide a colour determination. This colour determination identifies the total risk of transmission and further spread of COVID-19 in relation to the mass gathering. The "Colour Determination" key below the decision matrix describes the total risk for each colour.

<b>Total COVID-19 risk score (from "Risk Assessment" Tab)</b>	<b>2</b>
<b>Total mitigation score (from "Mitigation Checklist" Tab)</b>	<b>75</b>

## Risk Vs. Mitigation Matrix

<b>Total Risk Assessment Score</b>	Very Prepared to Mitigate COVID-19 Impacts (76-100)	Somewhat Prepared to Mitigate COVID-19 Impacts (51-75)	Somewhat Unprepared to Mitigate COVID-19 Impacts (26-50)	Very Unprepared to Mitigate COVID-19 Impacts (0-25)
0 - Negligible	<b>Very low</b>	<b>Very low</b>	<b>Very low</b>	<b>Very low</b>
1 - Very Low Risk	<b>Very low</b>	<b>Very low</b>	<b>Low</b>	<b>Low</b>
2 - Low Risk	<b>Low</b>	<b>Low</b>	<b>Low</b>	<b>Moderate</b>
3 - Moderate Risk (low-moderate)	<b>Low</b>	<b>Moderate</b>	<b>Moderate</b>	<b>Moderate</b>
4 - Moderate Risk (high-moderate)	<b>Moderate</b>	<b>Moderate</b>	<b>High</b>	<b>Very High</b>
5 - High Risk	<b>High</b>	<b>High</b>	<b>Very High</b>	<b>Very High</b>
6 - Very High Risk	<b>Very High</b>	<b>Very High</b>	<b>Very High</b>	<b>Very High</b>

<b>KEY FOR COLOUR DETERMINATION OF OVERALL RISK</b>	
<b>VERY LOW</b>	Overall risk of transmission and further spread of COVID-19 in relation to the Event is considered <u>very low</u> .
<b>LOW</b>	Overall risk of transmission and further spread of COVID-19 in relation to the Event is considered <u>low</u> . Recommend checking whether mitigation measures can be strengthened.
<b>MODERATE</b>	Overall risk of transmission and further spread of COVID-19 in relation to the Event is considered <u>moderate</u> . Recommend <u>significant</u> efforts to improve mitigation measures or reduce risk of transmission (decrease risk assessment score).
<b>HIGH</b>	Overall risk of transmission and further spread of COVID-19 in relation to the Event is considered <u>high</u> . Recommend <u>significant</u> efforts to improve <u>both</u> mitigation measures and reduce risk of transmission (decrease risk assessment score).
<b>VERY HIGH</b>	Overall risk of transmission and further spread of COVID-19 in relation to the Event is considered <u>very high</u> .

**CATALOGUE OF MEASURES**  
**Kronberg – Schafhofs Dressurfestival**  
**23. - 27. June 2021**

**Tabel Of Contents**

1.0.	Foreword	2
1.1.	Conditions on site	2
2.0	Entry authorizations	2
2.1.	Contact Restrictions	2
2.2.	Authorized to start	3
3.0	Sport specific, special measures	4
3.1.	Contactless show office	4
3.2	Access & Stables	4
3.3.	Warm-up	5
3.4.	Behaviour at the warm-up-arena and on the event area	5
4.0	Catering for the riders	5
5.0	Hygiene measures in connection with the EHV-1	6

Attachment 1

## 1.0 Foreword

While the Schafhof is traditionally known for dressage sport the events on the yard itself developed mostly in the former years. In 2021 Schafhof will host two international dressage events for the first time, offering a platform of best preconditions for the ambitious athletes. The plan is not only to establish the event in the sports calendar, but also to expand the "experience" factor over the years, thereby addressing an even larger target group and presenting equestrian sport from its most beautiful and at the same time most exciting side.

### 1.1 Conditions on site

The event takes place on the premises of the Linsenhoff-Rath family. The three riding arenas are arranged in a distributed manner so that accumulations can be avoided. The delimitation of the property also enables good entry control. See site plan in attachment 1.

## 2.0 Entry authorizations

Access to the site is only permitted for people who got a negative test result on a Covid rapid test. A test tent is available at the entrance for this purpose. Masks are also required on the entire site (except for the riders on a horse). The event will be held under exclusion of the public. Journalists will be admitted upon request, the organizer will ensure that there are no more than 10 journalists/photographers on the event premises at the same time. No workstations will be provided for journalists.

### 2.1 Contact Restrictions

Excerpts from the Lower Ordinance on Protection against New Infections with the Corona Virus.

- § 1.para.1: Each person shall reduce physical contact with other people who are not members of his or her household to an absolute minimum.
- § 2.para.1: Contacts of a person outside his/her own home shall be allowed only if in doing so the conditions specified in paragraphs 2 and 3 are observed.
- § 2.para 2: In public places, including public transport, each person must keep a minimum distance of 1.5 meters from other persons. This also applies to physical or sporting activities outdoors, but not to persons with whom the obligated person lives in the same apartment. Behavior in public that endangers the distance requirement according to sentence 1 is prohibited. This applies in particular to group formations. ....
- §2.para 3: .... Meetings and gatherings in public space are limited to a maximum of two persons, with the exception of gatherings of relatives and persons living in a shared apartment. ...

Offences can be sanctioned by the authorities with fines!

Non-compliance with the instructions/instructions is (also) a violation according to LPO § 920, 2.k. and can be punished with a disciplinary measure according to §921 LPO.

## 2.2 Authorized to start

Only athletes who are professional athletes with, or who belong to an Olympic or Paralympic squad, i.e. an Olympic squad, a perspective squad, a junior squad 1 or 2 or a state squad, and who train at a federal base, a state training center or a state base are eligible to compete, belong to a team in which the athletes who either fulfill the requirements according to number 1 or practice the sport professionally form the majority overall, or are economically independent athletes who are not bound to a club or association and

who practice their sport professionally without belonging to a federal squad as defined in number 1.

The organizer reserves the right to adapt the regulations and measures in accordance with the local authorities to the current situation in order to minimize the risk of spreading the coronavirus.

### **3.0 Sport specific, special measures**

The "Paperless Judging System" will be used, judges and writers will be separated with a plexiglass plate. The rider will receive the protocol by mail after the event.

#### **3.1 Contactless Show Office**

- The prize money will be transferred after the event. Please fill in the check-in form with your personal data and bank account details. The organizer reserves the right to work with the service EventClearing.
- Your record will be sent to you by e-mail. Please provide an e-mail address.
- When checking in entering the registration office is not allowed. If you have a concern where it is mandatory to talk to the registration office please use the window provided for this purpose. Please keep the appropriate hygienic distance and disinfect your hands before approaching.

We reserve the right to adjust regulations as needed to reflect current Corona measures for the tournament date.

#### **3.2. Access & Stables**

- Each rider is allowed to bring a maximum of 2 accompanying persons.

- Please observe the current Corona entry regulations of the Federal Republic of Germany, as well as the hess. quarantine regulations.
- There will be an attendance form. This is part of the participation / invitation and must be filled out by each rider, groom and accompanying person. It is not possible to start without sending this form and no access to the event area will be allowed.

Spectators as well as other persons who cannot be assigned to a rider or belong to the organizer's team are not allowed on the event premises.

### 3.3. Warm-up

The warm-up-arenas will be limited to a maximum of 8 horses.

### 3.4 Behaviour at the warm-up-arena and on the event area

The minimum distance of 1,5m must be kept at all times.

During vet-checks or general veterinary checks, please make sure that only persons who are absolutely necessary are there.

## 4.0. Catering for the riders

In order to provide catering for the riders on the event site as contactless and without queues as possible, the amount of catering stands will be considered, depending on the current regulations. The catering area will be outdoor, giving the best environment for removing the mask for eating at the tables. A maximum of 4 persons per table will be permitted.



## 5. Hygiene measures in connection with the EHV-1

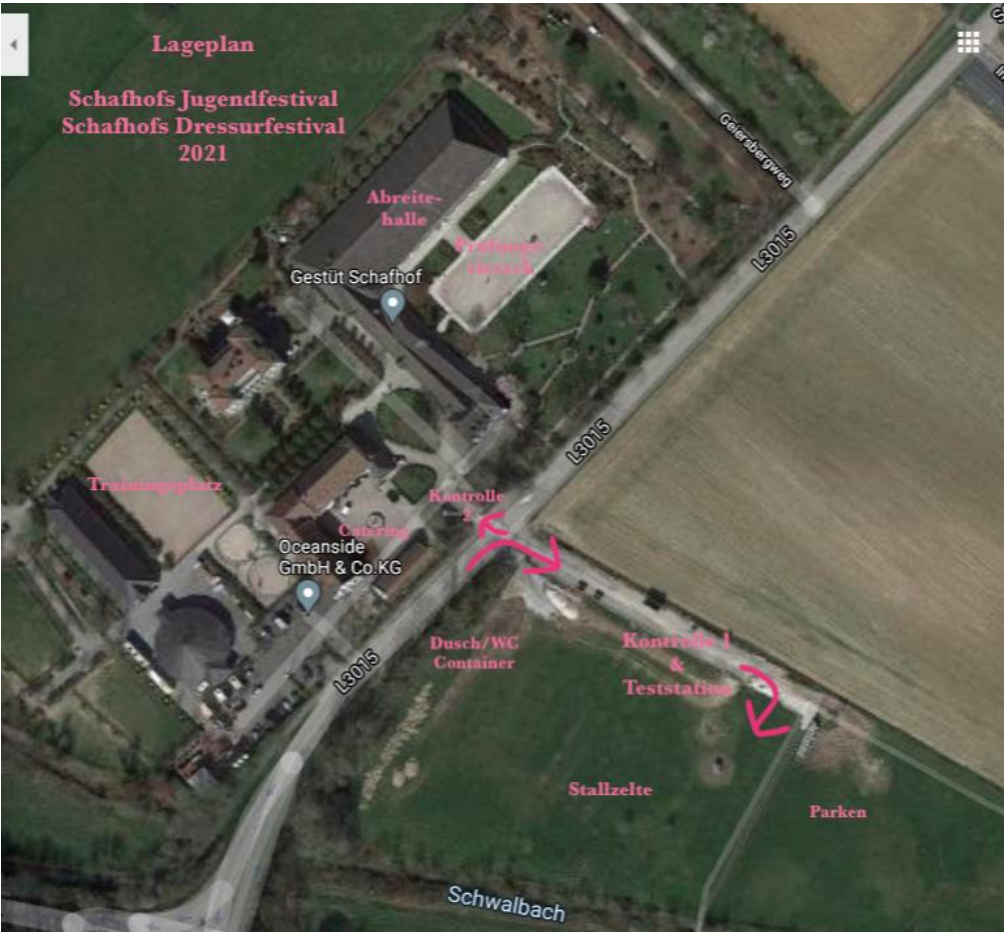
Only horses/ponies that have properly been vaccinated against EHV-1 will be permitted to the show grounds. All horses/ponies must have a full primary course. Subsequent Boosters must have been vaccinated within 6 months +21 days. Before arrival, the athletes are obliged to make a 10-day temperature protocol for the entered horses, which has to be kept on arrival and also during the event. You can find the form for this on the following FEI website:

[https://inside.fei.org/system/files/FEI%20Equine%20Health%20Self-Certification%20Form\\_interactive\\_web.pdf](https://inside.fei.org/system/files/FEI%20Equine%20Health%20Self-Certification%20Form_interactive_web.pdf). Access to the event area will furthermore only be allowed upon presentation of a negative PCR test for Equine Herpesvirus. The test result should not be older than 120 hours before arrival. Upon arrival, the temperature of the horses will be checked as well. The organizer urgently requests all participants to bring their own fever thermometer to protect against virus spread. During the event a body temperature control of the horses has to be done twice a day; the protocol has to be visibly attached to the box of the horse. The show veterinarian and the organizer have to be informed immediately in cases of anomalies such as the taxable values of fever (thermometer values above 38.5 ° C), diarrhea, cough or ataxia. Direct contact between horses should be avoided, as well as contact between humans and unfamiliar horses should be limited to what is necessary. The sharing of watering troughs, troughs and other equipment is strictly forbidden.

The organizer also reserves the right to carry out temperature checks at the show by the veterinarian.

Responsible for hygiene measures: Matthias Rath/Fabiana Rutsch

Attachment 1





# Attendance Form

## Kronberg



### Schafhofs Dressurfestival

23 - 27 June 2021

- Each participant of the event is obliged to inform himself/herself about these guidelines and to behave according to disinfection protection measures, distance rules and other regulations in accordance with the applicable laws and regulations
- All participants of the event (with the exception of the organizer's staff and employees) take part in the event voluntarily and on their own responsibility and do so at their own risk. The organizer assumes no responsibility for the infection with COVID-19 of persons participating in the event.
- I agree that my data will be transmitted and saved only to the responsible health authorities for the purpose of proving infection routes. The transfer of the data to other third parties is prohibited

**Function** .....

**(Rider/Groom/etc.)**

Name .....

Address .....

.....

Phone-Number .....

**Attending on:**

- Tuesday, 22nd June 2021
- Wednesday, 23rd June 2021
- Thursday, 24th June 2021
- Friday, 25th June 2021
- Saturday, 26th June 2021
- Sunday, 27th June 2021

Have you recently had fever, chills or unexplained cough, diffuse muscle pain, sudden loss of smell or taste?

Yes  No

Have you had contact with a person with Covid-19 or have you yourself been diagnosed or suspected of having Covid-19 infection in the last two weeks?

Yes  No

**Date** .....

**Signature** .....



## Check-In Form

Please fill out this form prior to your arrival at the showground to minimize the spread of EHV-1.

Hand in this Form **PRIOR TO UNLOADING THE HORSES** on arrival to the FEI Vet or designated person ordered by the FEI VET!

Rider: \_\_\_\_\_ Nat \_\_\_\_\_

Mobil Number: \_\_\_\_\_

I'm participating in  
 CDI4\* \_\_\_\_\_  
 CDIAm \_\_\_\_\_  
 National Dressage \_\_\_\_\_

### Information on the horses:

(if you are bringing more than 2 horses, please use a second form)

1 <sup>st</sup> Horse	
Gender	
FEI ID	
Chip No:	
EHV vaccinated	Yes___ / No ___

2 <sup>nd</sup> Horse	
Gender	
FEI ID	
Chip No:	
EHV vaccinated	Yes___ / No ___

	Date & Time	Temperature
3 days prior to arrival		
Evening before departure to the show		
Directly before loading		
Arrival on the showground		

	Date & Time	Temperature
3 days prior to arrival		
Evening before departure to the show		
Directly before loading		
Arrival on the showground		

### Remarks from the FEI-Vet or the VET in Charge on arrival:

Arrival on: \_\_\_\_\_ at \_\_\_\_\_

Abnormalities: \_\_\_\_\_  
 \_\_\_\_\_

No Abnormalities = can be stabled

\_\_\_\_\_  
 Name VET (Date) (Signature)

# TEMPERATURE FORM

*This must be placed visible in front of the horse's box at all times!*



Name Rider: \_\_\_\_\_ Phone No.: \_\_\_\_\_ / Groom number: \_\_\_\_\_

Horse Name: \_\_\_\_\_ FEI ID Horse: \_\_\_\_\_ Arrived on: \_\_\_\_\_ Temp. on Arrival: \_\_\_\_\_

Horse is vaccinated: YES  / NO

	1. Temperature Check		2nd Temperature Check		Comments
	Time	Temperature	Time	Temperature	
15.06.2021					
16.06.2021					
17.06.2021					
18.06.2021					
19.06.2021					
20.06.2021					

---

Remarks of the FEI Vet on-site: \_\_\_\_\_

Date: \_\_\_\_\_ Signature: \_\_\_\_\_

**I. DENOMINATION OF EVENT**

VENUE: Kronberg  
 DATE: 23/06/2021 - 27/06/2021  
 NF: Germany  
 Indoor:  Outdoor:

- |   |                                 |                                 |   |                                 |                                |
|---|---------------------------------|---------------------------------|---|---------------------------------|--------------------------------|
| <input type="checkbox"/> CDI1*            | <input type="checkbox"/> CDI2*  | <input type="checkbox"/> CDI3*  | <input checked="" type="checkbox"/> CDI4* | <input type="checkbox"/> CDI5*  | <input type="checkbox"/> CDI-W |
| <input type="checkbox"/> CDIO2*           | <input type="checkbox"/> CDIO3* | <input type="checkbox"/> CDIO4* | <input type="checkbox"/> CDIO5*           | <input type="checkbox"/> -NC    |                                |
| <input type="checkbox"/> CDIJ             | <input type="checkbox"/> CDIY   | <input type="checkbox"/> CDIP   | <input type="checkbox"/> CDIU25           | <input type="checkbox"/> CDICH  |                                |
| <input type="checkbox"/> CDIOJ            | <input type="checkbox"/> CDIOY  | <input type="checkbox"/> CDIOP  | <input type="checkbox"/> CDIOU25          | <input type="checkbox"/> CDIOCh |                                |
| <input checked="" type="checkbox"/> CDIAm | <input type="checkbox"/> CDIYH  |                                 |   |                                 |                                |
| <input type="checkbox"/> Championship     |                                 | <input type="checkbox"/> Games  |   |                                 |                                |

**II. GENERAL CONDITIONS**

- FEI Statutes, 24<sup>th</sup> edition, effective 19 November 2019.
- FEI General Regulations, 24<sup>th</sup> edition, 1<sup>st</sup> January 2020, updates effective 1<sup>st</sup> January 2021.
- FEI Veterinary Regulations, 14<sup>th</sup> edition, effective 1<sup>st</sup> January 2018, updates effective 1<sup>st</sup> January 2021.
- **FEI Dressage Rules (25<sup>th</sup> edition, effective 1<sup>st</sup> January 2014, including updates 1<sup>st</sup> January 2021) and if applicable the FEI Dressage World Cup™ Rules 2020/2021 and 2021/2022 and FEI Dressage Nations Cup™ Rules 2021.**
- Equine Anti-Doping and Controlled Medication Regulations (EADCMR), 3<sup>rd</sup> Edition, effective 1<sup>st</sup> January 2021.
- FEI Anti-Doping Rules for Human Athletes (ADRHA), based upon the 2021 WADA Code, effective 1<sup>st</sup> January 2021.
- The FEI Policy for Enhanced Competition Safety during the Covid-19 Pandemic, effective as of 1<sup>st</sup> July 2020 and until further notice.
- Given the current Covid-19 situation, please note that the FEI’s approval of a Schedule should not be taken as an absolute guarantee that the Event will definitely go ahead. The decision whether the Event can take place must be made by the OC and NF in close consultation with the applicable domestic government and public health authorities. It is the responsibility of each Participant to check the status of the Event prior to planning his/her travel to the Event.
- All subsequent published revisions, the provisions of which will take precedence.

.....

**FEI APPROVED SCHEDULE  
KRONBERG (GER) 23-27 June 2021**

---

Approved by the FEI, Lausanne, on 30/04/2021. Updated 11/05/2021 Covid-19.  
Updated 21/05/2021. Updated 25/05/2021. Updated 01/06/2021.  
Updated 14/06/2021. Updated 22/06/2021.



Bettina De Rham  
FEI Director Dressage & Para Dressage



**TABLE OF CONTENTS**

<b>I.</b>	<b>DENOMINATION OF EVENT.....</b>	<b>1</b>
<b>II.</b>	<b>GENERAL CONDITIONS .....</b>	<b>12</b>
<b>III.</b>	<b>THE FEI CODE OF CONDUCT FOR THE WELFARE OF THE HORSE .....</b>	<b>16</b>
<b>IV.</b>	<b>GENERAL INFORMATION .....</b>	<b>17</b>
	1. ORGANISER .....	17
	2. ORGANISING COMMITTEE .....	17
	3. EVENT DIRECTOR .....	17
<b>V.</b>	<b>OFFICIALS .....</b>	<b>18</b>
<b>VI.</b>	<b>INVITATIONS.....</b>	<b>20</b>
<b>VII.</b>	<b>ENTRIES.....</b>	<b>21</b>
	1. ENTRY DATES AND FEES:.....	21
	2. NO-SHOWS/LATE WITHDRAWALS:.....	22
	3. ADDITIONAL FEES/CHARGES BY ORGANISING COMMITTEE: .....	22
	4. DEGREE OF DIFFICULTY – FLOORPLAN GRAND PRIX FREESTYLE .....	23
<b>VIII.</b>	<b>TIMETABLE.....</b>	<b>24</b>
<b>IX.</b>	<b>COMPETITIONS DETAIL.....</b>	<b>26</b>
<b>X.</b>	<b>FACILITIES OFFERED .....</b>	<b>29</b>
	1. ATHLETES .....	29
	2. GROOMS .....	29
<b>XI.</b>	<b>LOGISTICAL/ADMINISTRATIVE/TECHNICAL INFORMATION .</b>	<b>30</b>
	1. DRAW .....	30
	2. COMPETITION ARENA(S).....	30
	3. PRACTICE ARENA(S) .....	30
	4. STABLES .....	30
	5. PAPERLESS JUDGING .....	30
	6. SCORING PROVIDER / TIMING PROVIDER.....	31
	7. AVERAGE SCORE / OPEN SCORING .....	31
	8. OTHER TECHNOLOGY/SERVICE PROVIDER(S) .....	31
	9. PRIZE GIVING CEREMONY .....	31
	10. ADVERTISING ON ATHLETES AND HORSES .....	31
	11. TICKETING .....	32
	12. BETTING .....	32
	13. TRANSPORT REIMBURSEMENT HORSES / PONIES .....	32
	14. WELCOME .....	32



15.	LOCAL TRANSPORTATION - ARRANGEMENTS FROM HOTEL TO SHOWGROUNDS.....	32
16.	ENTRY RIGHT TO SHOWGROUNDS/ACCREDITED PERSONS .....	32
17.	SUSTAINABILITY .....	32
<b>XII.</b>	<b>VETERINARY MATTERS.....</b>	<b>33</b>
1.	CUSTOMS FORMALITIES .....	33
2.	HEALTH REQUIREMENTS .....	33
3.	NATIONAL REQUIREMENTS.....	34
4.	PONIES .....	34
5.	INJURY SURVEILLANCE .....	34
6.	TRANSPORT OF HORSES .....	34
7.	VENUE ARRIVAL INFORMATION & FITNESS TO COMPETE .....	35
8.	EQUINE ANTI-DOPING AND CONTROLLED MEDICATION PROGRAMME (EADCMP). FEI Regulations, Chapter VII .....	36
<b>XIII.</b>	<b>HUMAN ANTI-DOPING.....</b>	<b>37</b>
<b>XIV.</b>	<b>ADDITIONAL INFORMATION .....</b>	<b>37</b>
1.	THE FEI POLICY FOR ENHANCED COMPETITION SAFETY DURING THE COVID-19 PANDEMIC .....	37
2.	INSURANCES AND NATIONAL REQUIREMENTS .....	38
3.	PROTESTS/APPEALS .....	40
4.	DISPUTES .....	40
5.	MODIFICATION TO SCHEDULE .....	40
6.	ADDITIONAL INFORMATION FROM THE ORGANISER .....	40
<b>XV.</b>	<b>ANNEXES.....</b>	<b>44</b>
1.	FEI ENTRY SYSTEM .....	44
2.	RESULTS .....	45

### **III. THE FEI CODE OF CONDUCT FOR THE WELFARE OF THE HORSE**

The Fédération Equestre Internationale (FEI) expects all those involved in international equestrian sport to adhere to the FEI's Code of Conduct and to acknowledge and accept that at all times the welfare of the horse must be paramount and must never be subordinated to competitive or commercial influences.

1. At all stages during the preparation and training of competition horses, welfare must take precedence over all other demands. This includes good horse management, training methods, farriery and tack, and transportation.
2. Horses and athletes must be fit, competent and in good health before they are allowed to compete. This encompasses medication use, surgical procedures that threaten welfare or safety, pregnancy in mares and the misuse of aids.
3. Events must not prejudice horse welfare. This involves paying careful attention to the competition areas, ground surfaces, weather conditions, stabling, site safety and fitness of the horse for onward travel after the event.
4. Every effort must be made to ensure that horses receive proper attention after they have competed and that they are treated humanely when their competition careers are over. This covers proper veterinary care, competition injuries, euthanasia and retirement.
5. The FEI urges all involved with the sport to attain the highest levels of education in their areas of expertise.

A full copy of this Code can be obtained from the Fédération Equestre Internationale, Chemin de la Joliette 8, CH-1006 Lausanne, Switzerland. Telephone: +41 21 310 47 47. The Code is available in English. The Code is also available on the FEI's website: <http://inside.fei.org/>

## **IV. GENERAL INFORMATION**

### **1. ORGANISER**

Name: Frankfurter Turnierstall Schwarz-Gelb e.V. in  
cooperation with  
Oceanside GmbH & Co.KG  
Address: Schafhof, Schwalbacher Str. 1, D-61476 Kronberg  
Telephone: +49-6173-9216-0  
Email: [oceanside@schafhof.com](mailto:oceanside@schafhof.com)

#### Contact Details Show Ground:

Address: Gestüt Schafhof, Schwalbacher Str. 1, 61476 Kronberg  
Telephone: +49-6173-9216-0  
GPS Coordinates: Latitude: 50.18269, Longitude: 8.52017

#### Accessibility Details:

Arrival by road: motorway A5, A66 or A661



Arrival by train: main station Frankfurt and then urban railway (S-Bahn) number 4

Arrival by plane: airport Frankfurt

### **2. ORGANISING COMMITTEE**

Honorary President: ./.  
President of the event: Matthias Alexander Rath  
Show Secretary: Fabiana Rutsch, Birgit Bochmann  
Press Officer: Martina Brüske, Andreas Kerstan, PEGAMO NETWORKS GmbH

### **3. EVENT DIRECTOR**

Name: Matthias Alexander Rath  
Address: Schafhof, Schwalbacher Str. 1  
D-61476 Kronberg  
Telephone: +49-6173-9216-0  
Email: [oceanside@schafhof.com](mailto:oceanside@schafhof.com)

**FEI APPROVED SCHEDULE  
KRONBERG (GER) 23-27 June 2021**

**V. OFFICIALS**

Please note that the schedule has been approved under the provision that all appointed Officials have successfully passed the on-line FEI Competency Evaluation Test.

Ref.	Panel	Function	FEI ID	Name	NF	Level	Contact Email
1	Ground Jury	Ground Jury President	10053735	Dr. Evi Eisenhardt	GER	5*	<a href="mailto:evi.eisenhardt@online.de">evi.eisenhardt@online.de</a> +49.170-4457779
		Ground Jury Member	10083464	Lars Andersson	SWE	5*	<a href="mailto:lars.andersson2011@live.com">lars.andersson2011@live.com</a>
		Ground Jury Member	10049290	Kurt Christensen	DEN	5*	<a href="mailto:kcls@mail.tele.dk">kcls@mail.tele.dk</a>
		Ground Jury Member	10023545	Henning Lehrmann	GER	5*	<a href="mailto:Henning.lehrmann@bauking.de">Henning.lehrmann@bauking.de</a> +49.173-2028992
		Ground Jury Member	10051972	Raphaël Saleh	FRA	5*	<a href="mailto:saleh.rafael@wanadoo.fr">saleh.rafael@wanadoo.fr</a>
		<del>Ground Jury Member</del>	<del>10000045</del>	<del>Peter Storr</del>	<del>GBR</del>	<del>5*</del>	<del><a href="mailto:peterstorrdressage@gmail.com">peterstorrdressage@gmail.com</a></del>
		Ground Jury Member	10023389	Alban Tissot	FRA	4*	<a href="mailto:alban.tissot@orange.fr">alban.tissot@orange.fr</a> +33. 607 25 80 10
		Ground Jury Member	10162563	Sandrine Trimborn	FRA	4*	<a href="mailto:trimborn.sandrine@gmail.com">trimborn.sandrine@gmail.com</a>
		<del>Foreign Judge</del>	<del>10003244</del>	<del>Isobel Wessels</del>	<del>GBR</del>	<del>5*</del>	<del><a href="mailto:isobelwessels@btinternet.com">isobelwessels@btinternet.com</a> +44.77.48.700.922</del>
		<del>Foreign Judge</del>	<del>10038239</del>	<del>Christoph Umbach</del>	<del>LUX</del>	<del>5*</del>	<del><a href="mailto:christof.umbach@yahoo.com">christof.umbach@yahoo.com</a> +352.621 35 18 92</del>
2	Foreign Technical Delegate	Foreign Technical Delegate		N/A			
3	Chief Steward	Chief Steward	10093355	Gabriele Sittner	GER	2	<a href="mailto:g.sittner@stadt-muehlheim.de">g.sittner@stadt-muehlheim.de</a> +49.170.7724849
4	Assistant Stewards	Assistant Steward	10053087	Katharina von Stetten	GER	2	<a href="mailto:kchvst@web.de">kchvst@web.de</a> +49 172 3612279
		Assistant Steward	10093358	Heidrun Weitz	GER	1	<a href="mailto:heidrun.weitz@t-online.de">heidrun.weitz@t-online.de</a> +49 (0) 175-6415216
		Assistant Steward	10234505	Hartwig Knapp	GER	nat.	<a href="mailto:hartwig.knapp@gmx.de">hartwig.knapp@gmx.de</a>
		Assistant Steward					
5	FEI Veterinary Delegate	Veterinary Delegate	10049007	Dr. Richard Hirschhäuser	GER	3	<a href="mailto:feivet125@web.de">feivet125@web.de</a> +49.171-7763510
6		Veterinary Services Manager	10082589	Dr. Thomas Hirschhäuser	GER		<a href="mailto:praxishirschhaeuser@web.de">praxishirschhaeuser@web.de</a>

**FEI APPROVED SCHEDULE  
KRONBERG (GER) 23-27 June 2021**

---



	Veterinary Services Manager / Treating Veterinarian	Permitted Treating Veterinarian				+49.178-5555306
<b>7</b>	Doctor/Medical Service	Doctor/Medical Service		Dr. Julia Opper	GER	+49.163-6550517
<b>8</b>	Farrier	Farrier		Christian Götz	GER	+49.172-9430979
<b>9</b>	NF Delegate	NF Delegate		Dr. Evi Eisenhardt	GER	

## **VI. INVITATIONS**

### **CDI4\***

Number of NFs invited:	unlimited
Total Number of athletes:	40
Number of home athletes:	20 (acc. to a special handicap agreed upon with NF GER)
Number of athletes per NF:	2
Number of horses per athlete:	2; 1 per tour
Number of FEI Wild Cards:	1
Number of OC Wild Cards:	2

Athletes are invited by the Organiser through their NF.

One (1) groom per athlete.

**The OC reserves the right to increase or reduce the number of athletes by NF and/or horses by athlete, according to the definitive number of entries. Any such changes will be immediately notified to all athletes, officials, NFs and FEI.**

### **CDIAm**

Number of Starters (max. 24):

- Approx. 12 foreign starting places for Athletes, who have been invited by the OC through their home NF
- Approx. 12 German starting placed for Athletes, who have been invited by the OC (German athletes acc. to a special handicap agreed upon with NF GER)
- Admitted Athletes: only Amateur athletes (26 years or older)
  - \* who have NO ranking in the FEI Dressage World Ranking List at the date of the definite entry.
  - \* who do not earn money for riding other people's horses, giving riding lessons, or for publicity or commercial purposes, etc. The buying and selling of Horses, as well as receiving prize money in cash, are not forbidden providing they do not constitute the Athlete's main source of income.
  - \* who have not obtained 3 results with a score of at least 73 % in international non-Amateur Grand Prix Competitions
- Admitted Horses:
  - \* 3 horses, however max. 2 horses per tour
  - \* Small Tour: horses of 7 years or older
  - \* Big Tour: horses of 8 years or older
  - \* Horses may only start in one tour

Athletes are invited by the Organiser through their NF.

One (1) groom per athlete.

## **VII. ENTRIES**

- You must use the FEI Entry System for all categories of this Event:  
<https://entry.fei.org>
- You will find additional documentation on:  
<https://inside.fei.org/fei/your-role/it-services/it-platforms/fei-entry-system>
- All Athletes and Horses participating in any International Competition must be registered with the FEI.
- Athletes and/or Horses present at the Event without having been entered through the FEI's Online Entry System will automatically be disqualified unless compelling circumstances warrant otherwise.

- German Athletes have to enter through the German Entry System NeOn! Entries of German Athletes will then be uploaded into the FEI Online Entry System!

### **1. ENTRY DATES AND FEES:**

#### **Deadlines for entries**

Definite Entries: 31/05/2021

Last date for substitutions: 23/06/2021, two hours prior to the horse inspection

Entries have to be in accordance with art 423 of the Dressage Rules and art 116 of the General Regulations.

#### **Entry fee per horse:**

CDI4\*: € 309,00

CDIAm: € 300,47

Stabling fee per horse: € 150,00

#### **VAT:**

CDI4\* entry fee: € 21,63 (7 %)

CDIAm: € 21,03 (7 %)

Stabling: € 28,50 (19 %)

#### **Total fee per horse:**

**CDI4\*: € 509,13**

**CDIAm: € 500,00**

Entry fees of German and foreign athletes are administered by EventClearing. The entry fee plus fee for electricity, EADCMP fee, manure disposal, fee for additional boxes or tack boxes etc. have to be paid by transfer ahead of the event to the following account:

EventClearing S.à r.l., Massewee 2, L-6186 Gonderange

IBAN-EUR:LU38 0025 4101 2925 8200

BIC / SWIFT: BILL LULL XXX

Ref.: CDI4\* Kronberg, FEI-number of the athlete

Please contact EventClearing for further details: [info@eventclearing.lu](mailto:info@eventclearing.lu)

[www.eventclearing.lu](http://www.eventclearing.lu)

Contact details **Entries:**

Name: Birgit Bochmann

Mobile: +49.170 - 23 00 188

Fax: +49.45 47 - 70 71 14

Email: [bbochmann@hotmail.com](mailto:bbochmann@hotmail.com)

## **2.NO-SHOWS/LATE WITHDRAWALS:**

**NB:** In the case of withdrawals after the date of definite entries or no-shows the athlete or the respective NF will be held liable to reimburse the Organiser for the actual financial loss incurred by the Organiser (i.e., stabling and hotel expenses) as a result of the late withdrawal or no-show.

Amount charged per horse: CDI4\*/CDIAM: € 500,00

## **3.ADDITIONAL FEES/CHARGES BY ORGANISING COMMITTEE:**

All other fees must be listed hereunder with the details of the amounts to be charged and approved by the FEI. Only fees approved by the FEI and listed in the approved Schedule can be charged by the Organiser.

EADCMP Fee:

Included in compulsory entry fee  Not included in compulsory entry fee

Lower Level Events (CIMs) CHF 18 per horse per event

(For definition of CIMs see Appendix E of the FEI General Regulations)

Higher Level Events CHF 25 per horse per event

(All other events not defined as CIM)

Electricity: € 80,00 (incl. 19 % VAT) – only 240-volt hook-up available

Manure disposal: € 40,00 (incl. 19 % VAT)

Hay: € 10,00 (incl. 7 % VAT)

Straw: not available

Shavings: € 14,00 per bale (incl. 19 % VAT)

Additional stable: € 200,00 (incl. 19 % VAT)

Tack stable: € 200,00 (incl. 19 % VAT)

Credit card fee: 5,5 %

Health Papers: € 40,00 per issued document

Parking fee: € 40,00 per lorry, caravan etc.

EADCMP Fee CDI4\*: CHF 25 per horse



EADCMP Fee CDIAm: CHF 18 per horse

All aforementioned amounts are including VAT

VAT Number of the Organiser: DE 814061319

**4. DEGREE OF DIFFICULTY – FLOORPLAN GRAND PRIX FREESTYLE**

DoD will be used.                       DoD will not be used.                       Not Applicable.

Athletes are required to login using their own credentials on to <http://dressagefreestyle.fei.org> to create or assign their Grand Prix Freestyle floorplan at the latest 2 hours prior to:

the horse inspection.

the draw of the Grand Prix.

**VIII. TIMETABLE**

**Competitions must not start before 08:00 h and must not finish after 23:00 h unless prior approval is granted by the FEI.**

**The current edition of Dressage Tests at the date of the show will be used and all tests must be ridden from memory.**

<https://inside.fei.org/fei/your-role/organisers/dressage/tests>

	<b>Day</b>	<b>Date</b>	<b>Time</b>
• Opening of stables:	Thursday	24/06/2021	11:00 a.m.
• Horse Inspection:			
CDI4* Competition 1 (Freestyle Tour)	Thursday	24/06/2021	04:30 – 05:30 p.m.
CDI4* Competition 3 (Special Tour)	Thursday	24/06/2021	04:30 – 05:30 p.m.
CDIAm Competition 5 (Small Tour)	Friday	25/06/2021	05:00 – 05:30 p.m.
CDIAm Competition 7 (Big Tour)	Friday	25/06/2021	05:00 – 05:30 p.m.
• Declaration of Starters			
CDI4* Competition 1 and 3	Thursday	24/06/2021	05:45 p.m.
CDIAm Competition 5 and 7	Friday	25/06/2021	05:45 p.m.
• Draw:			
CDI4* Competition 1 and 3	Thursday	24/06/2021	06:15 p.m.
CDIAm Competition 5 and 7	Friday	25/06/2021	06:15 p.m.

<b>Competitions CDI4*:</b>	<b>Day</b>	<b>Date</b>	<b>Time</b>	<b>Prize Money</b>
Competition 1 Grand Prix Qualifier for Comp 2-Grand Prix Freestyle	Friday	25/06/2021	11.45 h	5.000
Competition 2 Grand Prix Freestyle	Saturday	26/06/2021	18.45 h	10.000
Competition 3 Grand Prix Qualifier for Comp 4 Grand Prix Special with Music	Friday	25/06/2021	18.45 h	5.000
Competition 4 Grand Prix Special with Music	Sunday	27/06/2021	10.40 h	10.000
<b>Prizes in Kind</b>				./.
<b>Total Prize Money</b>				<b>30.000</b>

**FEI APPROVED SCHEDULE  
KRONBERG (GER) 23-27 June 2021**

<b>Competitions CDIAm:</b>	<b>Day</b>	<b>Date</b>	<b>Time</b>	<b>Prize Money</b>
Competition 5 Prix St. Georges - Small Tour	Saturday	26/06/2021	09.45 h	./.
Competition 6 Intermediate I - Small Tour	Sunday	27/04/2021	08.00 h	./.
Competition 7 Intermediate II - Big Tour	Saturday	26/06/2021	11.45 h	./.
Competition 8 Grand Prix - Big Tour	Sunday	27/04/2021	09.45 h	./.
<b>Prizes in Kind</b>				./.
<b>Total Prize Money</b>				./.

Please pay attention to the fact that arrival will only possible during the following times:

Thursday, 24/06/2021

11.00 h – 16.30 h

Friday, 25/06/2021

06.30 h – 09.30 h and

12.00 h – 15.00 h

**GENERAL CLASSIFICATION AT THE END OF THE COMPETITIONS:**

Leading athlete award - ./.  
 Best foreign athlete - ./.  
 Best home athlete - ./.  
 Team awards - ./.

**IX. COMPETITIONS DETAIL**

**FIRST DAY: FRIDAY**

**DATE: 25/06/2021**

**COMPETITION No 1 – CDI4\***

**Qualifier for Competition 2 - FEI Grand Prix Freestyle**

Test: FEI Grand Prix  
Number of horses per athlete: 1  
Open to: all CDI4\* athletes entered  
Draw/Art: acc. to Art. 425.2.1 b - (with groups of five in reverse order of the World Ranking List)  
Prize money: € 5.000  
Breakdown: 1.400/1.000/700/500/400/300/200/180/170/150  
If more athletes are placed the next receive € 50 each.

\* \* \* \* \*

**COMPETITION No 3 – CDI4\***

**Qualifier for Competition 4 - FEI Grand Prix Special with Music**

Test: FEI Grand Prix  
Number of horses per athlete: 1  
Open to: all CDI4\* athletes entered  
Draw/Art: acc. to Art. 425.2.1 b - with groups of five in reverse order of the World Ranking List  
Prize money: € 5.000  
Breakdown: 1.400/1.000/700/500/400/300/200/180/170/150  
If more athletes are placed the next receive € 50 each.

\* \* \* \* \*

**SECOND DAY: SATURDAY**

**DATE: 26/06/2021**

**COMPETITION No 5 - CDIAm**

**Almased Dressage Amateurs – Small Tour**

Test: FEI Prix St. Georges  
Number of horses per athlete: 2  
Open to: all CDIAm athletes entered  
Draw/Art: acc. to Art. 425.2 – ordinary draw  
Prize money: ./.  
Prizes in kind: prizes to the best 25 % (however at least 5 prizes)

\* \* \* \* \*

**COMPETITION No 7 – CDIAm**

**Almased Dressage Amateurs – Big Tour**

Test: FEI Intermediate II  
Number of horses per athlete: 2  
Open to: all CDIAm athletes entered  
Draw/Art: acc. to Art. 425.2 – ordinary draw  
Prize money: ./.  
Prizes in kind: prizes to the best 25 % (however at least 5 prizes)  
\* \* \* \* \*

**COMPETITION No 2 – CDI4\***

Test: FEI Grand Prix Freestyle  
Number of horses per athlete: 1  
Open to and compulsory for: the 15 best athlete/horse combinations from competition 1 (Grand Prix), incl. those ex aequo on the 15<sup>th</sup> place.  
Draw/Art: acc. to Art. 425.5 - with groups of five in reverse order of the results in competition 1  
Prize money: € 10.000  
Breakdown: 2500/1900/1400/1000/750/500/400/300/300/200/150/150/150/150/150

**THIRD DAY: SUNDAY**

**DATE: 27/06/2021**

**COMPETITION No 6 - CDIAm**

**Almased Dressage Amateurs – Small Tour**

Test: FEI Intermediate I  
Number of horses per athlete: 2  
Open to: all CDIAm athletes entered  
Draw/Art: acc. to Art. 425.2 – ordinary draw  
Prize money: ./.  
Prizes in kind: prizes to the best 25 % (however at least 5 prizes)  
\* \* \* \* \*

**COMPETITION No 8 – CDIAm**

**Almased Dressage Amateurs – Big Tour**

Test: FEI Grand Prix  
Number of horses per athlete: 2  
Open to: all CDIAm athletes entered  
Draw/Art: acc. to Art. 425.2.1.a – ordinary draw  
Prize money: ./.  
Prizes in kind: prizes to the best 25 % (however at least 5 prizes)  
\* \* \* \* \*

**COMPETITION No 4 – CDI4\***

Test: FEI Grand Prix Special with Music  
Number of horses per athlete: 1  
Open to and compulsory for: the 15 best athlete/horse combinations from competition 3 (Grand Prix), incl. those ex aequo on the 15<sup>th</sup> place.  
Draw/Art: acc. to Art. 425.4 - with groups of five in reverse order of the results in competition 3  
Prize money: € 10.000  
Breakdown: 2500/1900/1400/1000/750/500/400/300/300/200/  
150/150/150/150/150

## **X. FACILITIES OFFERED**

### **1.ATHLETES**

#### **Accommodation**

##### Hotels:

Concorde Hotel Viktoria, 61476 Kronberg, Viktoriastr. 7, Tel.: +49.6173-92100

Vienna House MQ Kronberg im Ts., Bahnhofstrasse 38, 61476 Kronberg,  
Tel.: +49.6173-969940

Schlosshotel Kronberg, Hainstr. 25, 61476 Kronberg, Tel.: +49.6173-27690

Dorint Hotel Frankfurt Oberursel, Königsteiner Str. 29, 61440 Oberursel,  
Tel: +49.6171-27690

Accommodation will be at the Athletes' own expense.

#### **Meals**

Meals (breakfast and one meal) will be provided on the show grounds from Wednesday, 23/06/2021 (evening) to Sunday, 27/06/2021 (noon) at the OC's expense.

### **2.GROOMS**

#### **Accommodation**

Accommodation will be at the Athletes' expense.

#### **Meals**

Meals (breakfast and one meal) will be provided on the show grounds from Wednesday, 23/06/2021 (evening) to Sunday, 27/06/2021 (noon) at the OC's expense.

**N.B. Organiser's must provide proper sanitary conditions. The showering facilities should be sufficient for both male and female grooms with hot and cold water. Shower facilities as well as restrooms should at all times be in a state of cleanliness.**

## **XI. LOGISTICAL/ADMINISTRATIVE/TECHNICAL INFORMATION**

### **1.DRAW**

Location of the draw: The draw will take place in the show office.

### **2.COMPETITION ARENA(S)**

Total dimensions: approx. 22 x 62 m  
(Competition arena - dimensions: 20 x 60 m)

Type of Footing: sand

### **3.PRACTICE ARENA(S)**

Total dimensions: 25 x 65 m (indoor)  
(Competition arena - dimensions: 20 x 60 m)

Type of Footing: sand

### **4.STABLES**

Size of boxes: 3 m x 3 m + 20% 3m x 4m

Horses will be stabled (incl. 1<sup>st</sup> bedding - shavings) on the show grounds from 23/06/2021 - 27/06/2021. The necessary number of boxes has to be ordered when handing in the entries – the order is binding. If no boxes have been ordered, the OC will reserve one box per horse entered. Only the assigned stables may be used.

### **5.PAPERLESS JUDGING**

It is compulsory to have a certified software/solution in order to offer Paperless Judging at FEI Dressage Events.

Will you use a FEI Certified Paperless Judging Software/Solution to manage judging at your Event? (The list of certified Service Providers is available here: <https://inside.fei.org/fei/your-role/it-services/it-providers/list>)

Yes

Name of Company: Black Horse One GmbH

**FEI Certified Service Provider ID number: GV91B111AKSCI**

Contact person at Event:

Name: Daniel Göhlen

FEI ID number: 10055662

Contact email: daniel@blackhorse-one.com



**6. SCORING PROVIDER / TIMING PROVIDER**

Will you use a FEI Certified Service Provider to manage the scoring and timing at your Event? (The list of certified Service Providers is available here: <https://inside.fei.org/fei/your-role/it-services/it-providers/list>)

No

Name of Company: HSR Performance

Contact person at Event:

Name: Hendrik Schulze Rückamp

FEI ID number: 10115627

Contact email: hendrik@schulze-rückamp.de

The FEI may require to be provided with real time results data feed of your Events according to FEI requirements; in this case you and your provider will be informed accordingly.

**7. AVERAGE SCORE / OPEN SCORING**

Average Score and Open Scoring: Yes  No

**8. OTHER TECHNOLOGY/SERVICE PROVIDER(S)**

Will you use other technology/service provider(s) at your Event?

Yes

Name of Company: EventClearing

Contact person at event:

Name: Matthias Lienhop

FEI ID number: 10044444

Contact email: info@eventclearing.lu

Activity/Function: Administration of settlement of accounts

**9. PRIZE GIVING CEREMONY**

The number of athletes required to present themselves for the prize giving ceremony of each competition is 3.

All prize giving ceremonies must strictly follow the **Covid-19 guidelines for Prize giving protocols and media activities.**

**10. ADVERTISING ON ATHLETES AND HORSES**

The athletes are authorised to carry the logo of their personal sponsor. The Chief Steward will check that the advertising and publicity on athletes and horses complies with Article 135 of the General Regulations.

**11. TICKETING**

Are you selling ticket for spectator to attend your event: Yes  No

**12. BETTING**

Betting will be authorised by the Organiser. Yes  No

**13. TRANSPORT REIMBURSEMENT HORSES / PONIES**

Transport expenses to be paid by the Athlete.

**14. WELCOME**

The time and date of arrival of athletes, horses and their means of transport must be given to the Organiser in order to facilitate them on arrival.

**15. LOCAL TRANSPORTATION - ARRANGEMENTS FROM HOTEL TO SHOWGROUNDS**

There will be no shuttle service available.

**16. ENTRY RIGHT TO SHOWGROUNDS/ACCREDITED PERSONS**

Entry right to the stable area acc. to FEI Veterinary Regulations Art. 1008-1009.

NUMBER ACCREDITED PERSONS:

Athlete plus 2 accompanying persons. The names of the accompanying persons have to be given to the OC before the event starts and have to be the same during the whole show. It will not be possible to alter the accompanying persons during the event.

Access to the event area is restricted to persons without symptoms of disease typical of Corona virus infection. Furthermore, only persons will be permitted to the showgrounds who present a daily valid Covid-19 test. A test mobile will be next to the show grounds.

**17. SUSTAINABILITY**

Please consider the environment when organising an FEI Event. Please find useful information on FEI Sustainability here:

<http://inside.fei.org/fei/your-role/organisers/handbook>

## **XII. VETERINARY MATTERS**

### **1. CUSTOMS FORMALITIES**

Contact details:

Name: Johannsmann Transportservice GmbH  
Address: Hagenort 6, 33803 Steinhagen  
Telephone: +49.52 04 – 8 90-1 11  
Fax: +49.52 04 – 8 90 - 2 22  
Email: info@johannsmann-pferdetransporte.de  
Opening hours: Times will be given with the definite time-table

Customs and veterinary fees will not be taken over.

### **2. HEALTH REQUIREMENTS**

#### **GENERAL**

In accordance with the FEI Code of Conduct for the Welfare of the Horse it is imperative that all Horses at FEI Events are physically fit and free from infectious disease before being allowed to compete.

#### **ENTRY OF HORSES**

Required health tests and vaccinations: ./.  
Quarantine period: ./.  
Specimen Import Licence applied: ./.

Every Athlete is obliged to deliver all necessary health certificates for the transport to the event or identification of the horses before they come into the stables:

a) in case of arrival from a EU-member-country, a health attestation for registered horses acc. to sample of Annex II to COUNCIL DIRECTIVE 2009/156/EC (see <http://eur-lex.europa.eu/legal-content/EN/TXT/PDF/?uri=CELEX:32009L0156&from=DE>) of the currently valid version will be necessary.

b) in case of arrival from a country not belonging to the EU, a health certificate for registered horses acc. to sample of annex II (see ([https://www.bmel.de/DE/Tier/TierhandelTransport/Gesundheitsbescheinigungen/\\_texte/Pferde.html](https://www.bmel.de/DE/Tier/TierhandelTransport/Gesundheitsbescheinigungen/_texte/Pferde.html)) of the decision of the commission 92/260/EG of the currently valid version will be necessary.

A certificate must be done in at least one official language of the country of destination and in one official language of the member country. The Athlete must carry with him the original certificate, not a copy.

The organiser sees to it that on the competition site, an official state veterinarian is present to issue the health certificates which are necessary for the transport of the horses to their destination abroad.

In case the OC has entrusted a forwarding agency, the latter is ready to assist regarding the required documents.

Furthermore, questions relating to health requirements for horses can be directed to the veterinary authorities in the country of origin or in Germany.

### **3. NATIONAL REQUIREMENTS**

In addition to the Rules and Regulations applicable as set out above the following national regulations apply:

- German Animal Welfare Act (Tierschutzgesetz):  
[www.gesetze-im-internet.de/bundesrecht/tierschg/gesamt.pdf](http://www.gesetze-im-internet.de/bundesrecht/tierschg/gesamt.pdf)
- German Law concerning Manufacture and Distribution of Medicines (Arzneimittelgesetz):  
[www.gesetze-im-internet.de/bundesrecht/amg\\_1976/gesamt.pdf](http://www.gesetze-im-internet.de/bundesrecht/amg_1976/gesamt.pdf)
- German Animal Health Act (Tiergesundheitsgesetz):  
[www.gesetze-im-internet.de/tiergesg/TierGesG.pdf](http://www.gesetze-im-internet.de/tiergesg/TierGesG.pdf)
- German Regulation for Animal-Welfare during Transport (Tierschutztransportverordnung)  
[www.gesetze-im-internet.de/bundesrecht/tierschtrv\\_2009/gesamt.pdf](http://www.gesetze-im-internet.de/bundesrecht/tierschtrv_2009/gesamt.pdf)
- German Regulation regarding Livestock Transport (Viehverkehrsverordnung)  
[www.gesetze-im-internet.de/bundesrecht/viehverkv\\_2007/gesamt.pdf](http://www.gesetze-im-internet.de/bundesrecht/viehverkv_2007/gesamt.pdf)
- etc.

### **4. PONIES**

FEI Veterinary Regulations, Chapter IX and Annex IX: For all Pony Events, Ponies must be available for Pony Measurement if requested by the FEI.

### **5. INJURY SURVEILLANCE**

FEI Veterinary Regulations, Chapter VIII: Horses participating in FEI Events are subject to injury surveillance protocols; and in the event of fatality, a post mortem examination.

### **6. TRANSPORT OF HORSES**

Horses must be fit to travel and be transported in suitable vehicles. Any government requirements for disease testing and control must be requested well in advance, to ensure that the horse is in compliance by the time of arrival at the border of the country where the Event is taking place. Athletes, or their representatives, have the responsibility to comply with national legislation in both their country of origin and the host nation of the Event. Where necessary athletes must contact local government authorities or veterinary advisors for information regarding animal health requirements and transport legislation. Within the European Union (EU), this includes EU Council Regulation (EC) No 1/2005 concerning the protection of animals during transport within the Member States of the EU.

**7. VENUE ARRIVAL INFORMATION & FITNESS TO COMPETE**

**7.1 PASSPORTS. FEI General Regulations Article 137**

**For all issues relating to FEI Horse Passports/FEI Recognition Cards please contact your National Federation.**

All Horses competing at FEI Events must be registered with the FEI.

FEI Passports or FEI Recognition Cards (for those Horses with a national passport approved by the FEI) are compulsory for FEI Events.

NB: Horses entered in CIMs in their country of residence are not required to have an FEI Passport or FEI Recognition Card but must be properly registered with the FEI and identifiable (GRs 137.2).

Athletes who do not present a Horse's Passport and/or Recognition Card, or one that is not correctly validated or fail to meet other passport requirements will be **subject to Sanctions in accordance with Annex VI of the FEI Veterinary Regulations** and may not be allowed to compete.

**NB** for Horses permanently resident in a Member State of the European Union: all Horses must have a national EU passport in compliance with EU Regulations to which a FEI Recognition card is applied. The exception to this being Horses in possession of an FEI passport which has been continually revalidated without interruption.

**7.2 VACCINATIONS - EQUINE INFLUENZA. FEI Veterinary Regulations Article 1003**

Horses competing at FEI Events must comply with the requirements for Equine Influenza vaccination in accordance with the Veterinary Regulations and as summarised below.

VACCINATION	PROTOCOL	ELIGIBILITY TO ENTER VENUE
<b>Primary Course</b>	1 <sup>st</sup> Vaccination: day 0 2 <sup>nd</sup> Vaccination: day 21-92	May compete 7 days after the 2 <sup>nd</sup> Vaccination
<b>First Booster</b>	Within 7 months of the 2 <sup>nd</sup> vaccination of the Primary Course	May compete for 6 months +21 days after the 2 <sup>nd</sup> vaccination of the Primary Course Must not compete in the 7 days after receiving a vaccination
<b>Boosters</b>	<b>MINIMUM:</b> within one year of previous booster vaccination <b>IF COMPETING:</b> must be in the 6 months +21 days of the booster previous vaccination	Must have been vaccinated within 6 months +21 days before arriving at the Event Must not compete in the 7 days after receiving a vaccination

All FEI registered Horses intending to compete at FEI Events (including CIMs) must be vaccinated against Equine Influenza in accordance with these VRs. The exception being if the applicable domestic legislation prevents the use of Equine Influenza vaccines within the relevant territory

**7.3 EXAMINATION ON ARRIVAL. FEI Veterinary Regulations Article 1031**

On arrival at an Event venue, all Horses must undergo an examination by a veterinarian to confirm their identification from their passport and micro-chip ID (where present), their vaccination status and general health. To protect all horses attending events, any Horse with a questionable health status concerning vaccination, disease or other concerns, must be stabled within the isolation facilities provided by the Organising Committee pending a decision on entering the venue.

**7.4 HORSE INSPECTIONS. FEI Veterinary Regulations Articles 1034-1042**

All Horses will be assessed for their fitness to compete during the Horse Inspection. Any Horse demonstrating questionable fitness may be referred to the Holding Box for further veterinary examination. Horses not deemed fit to compete by the Inspection Panel will not be permitted to compete.

**7.5 LIMB SENSITIVITY EXAMINATION. FEI Veterinary Regulations Articles 1048-1053**

All Horses are subject to examination under the protocol for abnormal limb sensitivity throughout the period of an Event. For Jumping that includes, but is not limited to, between rounds and before the Jump Off. For Endurance that includes, but is not limited to, pre-ride, during the ride and after the ride. Horses may be examined once or on multiple occasions during the Period of an Event. Horses may be selected for examination under the protocol randomly or they may be targeted. All Horses selected to be tested must submit promptly to the examination or are subject to immediate disqualification. There is no obligation to examine any specific number of Horses at an Event.

**8. EQUINE ANTI-DOPING AND CONTROLLED MEDICATION PROGRAMME (EADCMP). FEI Regulations, Chapter VII**

**8.1 SAMPLING. FEI Veterinary Regulations Chapter VII**

All horses competing at FEI Events may be subject to sampling for the presence of Prohibited Substances in accordance with the Anti-Doping and Controlled Medication Regulations (EADCMRs). Horses may be selected for sampling in accordance with obligatory testing, targeted or random sampling procedures. Refer to FEI Financial Charges for details of fees relating to Equine and Human Anti-Doping program (EADCMP), which OCs/NFs have the right to charge to the athlete (applicable for all FEI events worldwide).

**8.2 ELECTIVE TESTING. FEI Veterinary Regulations Article 1058**

Elective Testing may be carried out prior to an Event to check for the presence of Prohibited Substances. Please refer to <https://inside.fei.org/fei/cleansport/horses> for information and details.

### **XIII. HUMAN ANTI-DOPING**

Athletes can be tested at any FEI Event, by the FEI or by other Anti-Doping Organisations with Testing jurisdiction. Organisers will have the responsibility to provide facilities and staff/volunteers to facilitate such Testing if requested by the FEI as outlined in article 22.3 of the FEIs' Anti-doping Rules for Human Athletes (ADRHA).

The ADRHA rules are published on the FEI's website at <http://inside.fei.org/content/anti-doping-rules>

### **XIV. ADDITIONAL INFORMATION**

#### **1. THE FEI POLICY FOR ENHANCED COMPETITION SAFETY DURING THE COVID-19 PANDEMIC**

The FEI Policy for Enhanced Competition Safety during the Covid-19 Pandemic ("Policy") (<https://inside.fei.org/fei/covid-19/return-to-play/policy-tools>) is mandatory and applies for any FEI Event taking place **as of 1 July 2020**. The Policy has been developed based on currently accepted best practices by the WHO and US Center for Disease Control (CDC) and will be continually reviewed and updated as more information becomes available. It is not intended to replace the applicable guidance and policies from domestic government and health authorities, but to supplement their recommendations with sport specific considerations.

The OC shall submit the risk assessment and mitigation plan (including name and contact details of the person in charge) to the FEI as an annex to the Event Schedule, **at the latest ten (10) working days before the event's deadline for Definite Entries.**

Events for which the FEI has not received the documented risk assessment and mitigation measures plan in accordance with article 2.1.g) of the Policy **will be removed from the FEI calendar** in accordance with Article 112.3 of the FEI General Regulations.

#### **ASSUMPTION OF RISK / WAIVER OF LIABILITY**

In consideration of being allowed to participate in the Event and related activities, all Participants (as defined in the Policy) acknowledge, appreciate, and agree that:

1. Participation includes possible exposure to and illness from infectious diseases including but not limited to COVID-19. While particular rules and personal discipline may reduce this risk, the risk of serious illness and death does exist; and,
2. The Participants knowingly and freely assume all such risks, both known and unknown, even if arising from the negligence of the OC or others, and assume full responsibility for their participation; and,

3. The Participants willingly agree to comply with the stated and customary terms and conditions for participation as regards protection against infectious diseases. If, however, a Participant observes any unusual or significant hazard during his/her presence or participation, the Participant will remove himself/herself from participation and bring such to the attention of the nearest official immediately; and,
4. The Participants, for themselves and on behalf of their heirs, assigns, personal representatives and next of kin, HEREBY RELEASE AND HOLD HARMLESS THE OC AND THE FEI, their officers, officials, agents, and/or employees, other participants, sponsoring agencies, sponsors, advertisers, and if applicable, owners and lessors of premises used to conduct the event ("RELEASEES"), WITH RESPECT TO ANY AND ALL ILLNESS, DISABILITY, DEATH, or loss or damage to person or property, WHETHER ARISING FROM THE NEGLIGENCE OF RELEASEES OR OTHERWISE, to the fullest extent permitted by law.

The Participants confirm to have read this release of liability and assumption of risk agreement, fully understand its terms, understand that they have given up substantial rights.

## **2.INSURANCES AND NATIONAL REQUIREMENTS**

Equestrian sports involve inherent dangerous risks. To the greatest extent permitted by law, the FEI and the FEI Event Organiser shall NOT be liable for any damages relating to loss of property or injury of any kind to Athletes, Owners, Support Personnel or Horses at or in connection with an FEI Event and the FEI expressly excludes all such liability.

### **2.1 ATHLETES, OWNERS AND SUPPORT PERSONNEL**

#### **2.1.1 Personal Accident and Health Insurance**

It is your responsibility as an Athlete/Owner/ Support Personnel to ensure that you have adequate personal accident insurance in place to cover your participation at FEI Events and in particular to insure against any personal injury or medical expenses arising from an accident, injury or illness which may occur at a FEI Event.

You should check with your National Federation to confirm if your National Federation's insurance policy (if any) covers personal accidents and/or illnesses which may occur when you are attending at/participating in FEI Events.

If your National Federation does not have a personal accident/health insurance policy or if the National Federation's insurance policy does not cover personal accident or health claims, then you should obtain your own personal accident and health insurance policy to cover your attendance/participation at FEI Events.



### **2.1.2 Personal Property Insurance**

You should also ensure that you are insured against property loss, theft or damage which may occur at an FEI Event.

Again, the advice is to check with your National Federation to confirm if they have an insurance policy in place which would cover you in case of such property loss, theft or damage. If not, then you should obtain your own personal property insurance to cover such situations.

### **2.1.3 Press Equipment**

Press equipment and other items left in the Press workroom, Press lockers, the Press Tribune or anywhere on the showgrounds are left entirely at the owner's risk. The Organising Committee does not accept any responsibility for any loss or damage to such equipment or items. Members of the Press are advised not to leave any equipment or personal items unattended.

## **2.2 ATHLETES AND OWNERS**

### **2.2.1 Third Party Liability Insurance**

As an Athlete/Owner you are personally responsible for damages to third parties caused by you, your employees, Support Personnel, your agents or your Horses. You are, therefore, strongly advised to take out third-party liability insurance providing full coverage in relation to FEI Events at home and abroad, and to keep the policy up to date.

The FEI and the Organiser will NOT be responsible for any damage caused to third parties by you, your employees, Support Personnel, your agents or your Horses.

### **2.2.2 Additional Liability Information**

The organizer declines any liability for property or pecuniary damage which may happen to visitors, athletes, grooms and horse owners through slight negligence of the organizer, his delegates or his assistants. The OC is liable in case of intent, gross negligence as well as in case of injury to life, body or health and in further cases he is liable for compelling legal liability acc. to the legal requirements.

### **2.2.3 Horse Insurance**

As an Owner you should ensure that your Horses are adequately insured against any injuries or illnesses they may sustain while participating at a FEI Event.

### **3. PROTESTS/APPEALS**

To be valid, all Protests and Appeals must be made in writing and accompanied by a deposit of CHF 150.- or equivalent.

Protest and appeal forms are available on the FEI website:

Protest: <http://inside.fei.org/sites/default/files/FEI%20Protest%20Form.pdf>

Appeal: <http://inside.fei.org/sites/default/files/FEI%20Appeal%20Form.pdf>

### **4. DISPUTES**

In the event of any discussion concerning the interpretation of the schedule (in translated languages), the English version will be decisive.

### **5. MODIFICATION TO SCHEDULE**

In exceptional circumstances, together with the Approval of the Chefs d'Equipe, host NF delegate, if any, and the Ground Jury, the OC may change the schedule in order to clarify any matters arising from an omission or due to unforeseen circumstances. Any such changes must be notified to all Athletes and Officials as soon as possible and they must be reported to the FEI by the Foreign Judge.

### **6. ADDITIONAL INFORMATION FROM THE ORGANISER**

#### **6.1 GERMAN SHOW RULES**

The OC acknowledges that para 1.4 LPO (German Show Rules) is binding for international events in Germany.

#### **6.2 TIMETABLE**

The times stated under "VIII. TIMETABLE" are subject to alterations.

#### **6.3 FEI-PASSPORTS**

Horses entered in CIMs (CDI1\*/CDI2\*/CDIYH/CDIAm/CDIU25/CDIJ/CDIY/CDICh/CDIP) in their country of residence are not required to have an FEI Passport or FEI Recognition Card but must be properly registered with the FEI and identifiable (GRs 137.2).

#### **6.4 GERMAN ANIMAL WELFARE ACT**

According to paragraph 6 of the German Animal Welfare Act, trimming the vibrissae around eyes and muzzle as well as clipping or cutting the hairs inside the ears of horses are prohibited.

#### **6.5 INFORMATION ON COVID19**

FEI: see Covid-19 Frequently Asked Questions (FAQs): <https://inside.fei.org/fei/covid-19/faqs>

NF GER: see "Coronavirus: "Impact on Equestrian Sport" (Auswirkungen auf den Pferdesport): <https://www.pferd-aktuell.de/coronavirus>

#### **6.6. DATA PROTECTION BASIC REGULATION**

With the entry declaration the athlete agrees that the Organizer is permitted to save their data and uses photo and film footages made at the event of the athletes for publications.

#### **6.7 DOGS**

Dogs will not be allowed on the show grounds, incl. stable area.

**6.8 CANCELLATION CLAUSE**

Should the event become impossible or is cancelled due to a force majeure event including an official order or regulation (e.g. from an authority/governmental agency) the organizer assumes no liability for any incurred costs – including but not limited to loss of earnings which might arise for the athlete, except that any entry fees paid will be reimbursed if the event has not already started. Furthermore, the athlete waives claims to recourse against the organizer in case of cancellation of the event due to a force majeure event including an official order or regulation.

**6.9. EHV-1**

Only horses/ponies will be permitted to the show grounds that have properly been vaccinated against EHV-1.

All horses/ponies must have a full primary course. Subsequent Boosters must have been vaccinated within 6 months +21 days.

**If between the primary course and the booster are less than 6 months, horses are allowed to take part in the show without the booster vaccination.**

Before arrival, the athletes are obliged to make a 10-day temperature protocol for the entered horses, which has to be kept on arrival and also during the event.

You can find the form for this on the following FEI website:

[https://inside.fei.org/system/files/FEI%20Equine%20Health%20Self-Certification%20Form\\_interactive\\_web.pdf](https://inside.fei.org/system/files/FEI%20Equine%20Health%20Self-Certification%20Form_interactive_web.pdf)

Access to the event area will only be allowed upon presentation of a negative PCR test for Equine Herpesvirus.

The test result should not be older than 120 hours before arrival. Upon arrival, the temperature of the horses will be checked as well.

The organizer urgently requests all participants to bring their own fever thermometer to protect against infection!

During the event a body temperature control of the horses has to be done 2 times a day; the protocol has to be visibly attached to the box of the horse. Anomalies such as the taxable values of fever (thermometer values above 38.5 ° C), diarrhea, cough or ataxia must be immediately informed to the show veterinarian and the organizer.

Direct contact between horses should be avoided, as well as contact between humans and unfamiliar horses should be limited to what is necessary.

The sharing of watering troughs, troughs and other equipment is strictly forbidden.

The organizer also reserves the right to carry out temperature checks at the show by the veterinarian.

**Age of Athletes and Horses according to the Event's Category:**

<b>Event's Category</b>	<b>Age of Athletes</b>	<b>Age of Horses</b>
<b>Grand Prix/Grand Prix Special/ Grand Prix Freestyle/ Intermediate II/Intermediate A/ Intermediate B</b>	As of 16 <sup>th</sup> year	Min 8 y.o.
<b>Prix St. Georges/Intermediate I/ Intermediate I Freestyle</b>	As of 16 <sup>th</sup> year	Min. 7 y.o.
<b>CH-Y/CDIY/CDIOY</b>	As of 16 <sup>th</sup> year to end 21 <sup>st</sup> year	Min. 7 y.o.
<b>CH-J/CDIJ/CDIOJ</b>	As of 14 <sup>th</sup> year to end 18 <sup>th</sup> year	Min. 6 y.o.
<b>CH-P/CDIP/CDIOP</b>	As of 12 <sup>th</sup> year to end 16 <sup>th</sup> year	Min. 6 y.o.
<b>CH-Ch/CDICh/CDIOCh</b>	As of 12 <sup>th</sup> year to end 14 <sup>th</sup> year	Min. 6 y.o.
<b>CH-U25/CDIU25/CDIOU25</b>	As of 16 <sup>th</sup> year to end 25 <sup>th</sup> year	Min. 8 y.o.
<b>CDIAm</b>	As of 26 <sup>th</sup> year	Min. 7 y.o. Medium tour Min. 8 y.o.
<b>CDIYH</b>	As of 16 <sup>th</sup> year	Min. 5 y.o. – Max. 7 y.o.

CH-M-YH-D	As of 16 <sup>th</sup> year	5 y.o. / 6 y.o. / 7 y.o.
-----------	-----------------------------	--------------------------

**DEDUCTIONS FROM PRIZE MONEY AT COMPETITIONS:**

The tax form will be sent to the respective NFs, who are requested to forward the form to their athletes.

**Distribution of Prizes and Indemnities**

After having deducted possible outstandings from the prize-money and/or reimbursements (e. g. transport charges, travelling expenses), the remaining amount will be transferred after the event to the account registered with app.eventclearing.lu. Athletes, who have not used EventClearing so far are kindly requested to register themselves after closing date of entries, after having received an email from EventClearing!

Settlement will be done per athlete. Depending on the agreement with the horse owner, each athlete binds himself to pass on to the horse owners the prize money or prizes in kind rewarded instead of prize money. The organizer is allowed to deduct possibly outstanding debts of the athlete. Acc. to § 50a EstG this also applies to foreign horse owners. Taxes are due on prize money as well as on prizes given in kind instead of prize money and on reimbursements. As a rule, the deduction (based on the amount received per day) is 0 % on amounts up to and including 250 EUR, 15 % plus solidarity surcharge (currently 0,82 % on the prize money or 5,5 % on the amount of tax deduction) on amounts above 250 EUR. Travelling expenses being taken over or reimbursed are only regarded as revenues if they exceed the actual costs and the reimbursement for additional meal allowances acc. to § 4 Abs. 5 Satz 1 Nr. 5 EstG. The tax deduction has to be certified on demand. Those foreign athletes being exempted from tax deduction are kindly asked to submit an exemption certificate either with the entry or on the first show day at the latest. Every athlete himself is responsible for the correctness of the details he submits.

If Athletes have to be placed equally, the money value of possible prizes in kind (e. g. a car) is divided accordingly.

**IMPORTANT**

**The total amount of prize money shown for each Competition in the schedule must be distributed. (FEI General Regulations articles 127 and 128)**

The value of the 1st prize must not exceed 1/3 of the total prize money announced for the competition. Distribution of prize money: distributed to 25 % of participants.

If there are between 5 and 19 athletes in the competition, min 5 prizes must be distributed.

If there are 4 or less athletes in the competition, the table below applies.

Number of Starters	1	2	3	4	From 5 and above
1 <sup>st</sup>	33%	33%	33%	33%	All the prize money scheduled must be distributed among all placed athletes.
2 <sup>nd</sup>		25%	25%	25%	
3 <sup>rd</sup>			20%	20%	
4 <sup>th</sup>				15%	
Total distributed	33%	58%	78%	93%	

The amount to be given to each athlete must be stated in the schedule.

## **XV. ANNEXES**

### **1. FEI ENTRY SYSTEM**

Please fill the form below in order to provide you and the other members of your committee or your IT Providers access to the FEI Entry System.

**FEI ID<sup>1</sup>:** 10106824  
**Name\*:** Bochmann  
**First Name\*:** Birgit  
**E-Mail\*:** bbochmann@hotmail.com  
**Access Rights\*:**  Admin<sup>2</sup>  Consult<sup>3</sup>

---

**FEI ID<sup>1</sup>:** 10010055  
**Name\*:** Rath  
**First Name\*:** Matthias Alexander  
**E-Mail\*:** matthias.rath@schafhof.com  
**Access Rights\*:**  Admin<sup>2</sup>  Consult<sup>3</sup>

---

**FEI ID<sup>1</sup>:** 10044444  
**Name\*:** Lienhop  
**First Name\*:** Matthias  
**E-Mail\*:** matthias@eventclearing.lu  
**Access Rights\*:**  Admin<sup>2</sup>  Consult<sup>3</sup>

---

- 1) If already have an FEI user account.  
2) Provide you the required access to manage entries and substitutions and download entries/lists.  
3) You are just able to consult and download the entries/lists.  
\*) Mandatory Fields

## **2. RESULTS**

In order to proceed with the results publication and for qualification purposes the FEI requires results to be uploaded directly on the FEI Database within two days after the conclusion of the event.

All relevant information, file format and tutorial can be found on this page:

<http://inside.fei.org/fei/your-role/Organisers/dressage/results-forms>

If you or your provider are unable to produce the required files, results will be accepted by e-mail to [dressageresults@fei.org](mailto:dressageresults@fei.org), in the proper XML format immediately after the event. Please refer to compulsory format for CDIs; the file can be downloaded using the following link: <http://inside.fei.org/fei/your-role/Organisers/xml-format>

All results must include FEI Passport Registration number of horses and FEI ID number of Athletes.

Please note that as per Art 109.6 (GR): OCs of International Events must inform the FEI and NFs whose teams or individuals have taken part, of the results and prize money paid to each placed Athlete and team, within two (2) days following the Event for all disciplines managed by an online entry system and five (5) days for all other discipline(s), unless otherwise specified for qualification and ranking reasons as communicated by the FEI. Failure from organisers of International Events to provide the FEI with the appropriate result(s) and/or prize money information by the aforesaid deadline and/or in the aforesaid format shall entail a warning for the first violation and thereafter a fine of CHF 1'000.- per violation.