

4. Fahrturnier Crostwitz / Horka 13.06.2021

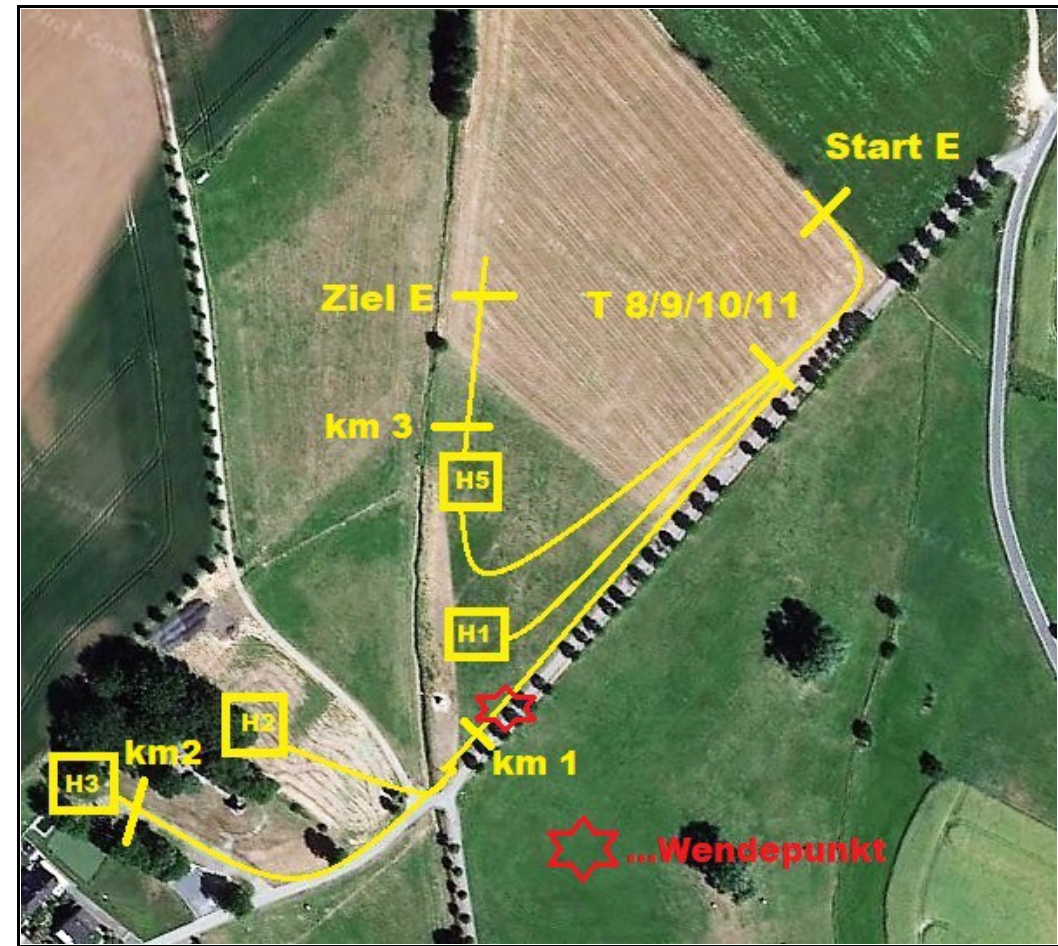
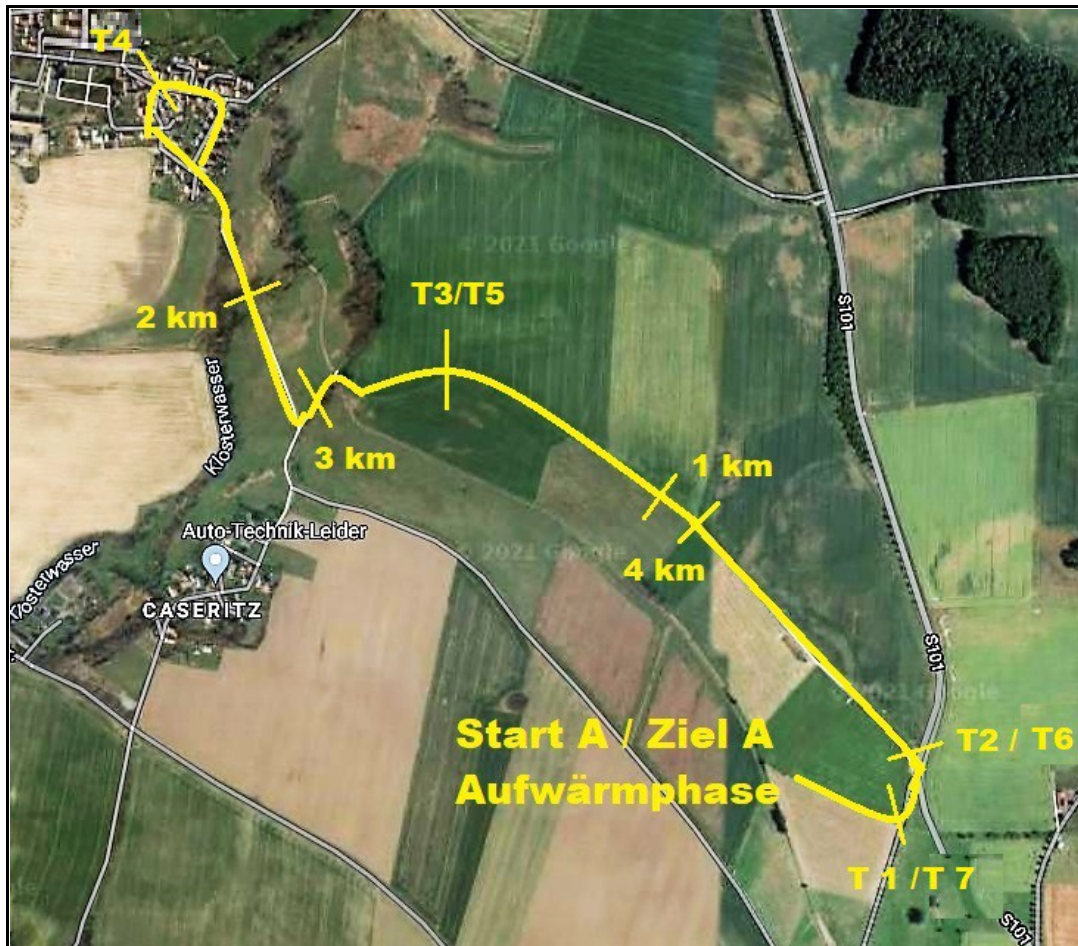
Prüfung Nr. 16+20+21

Geländeprüfung Kl. A

Start A / T1 / T2 / KM1 / T3 / KM2 / T4 / KM3 / T5 / KM4 / T6 / T7 / Ziel A

Start E / T8 / H1 / T9 / KM1 / H2 / T10 / KM2 / H3 / T11 / H5 / KM3 / Ziel E

Zu fahren: H1, H2, H3, H5; Tor A-D



www.PSV-am Klosterwasser.de

